

M3 Junction 9 Improvement

Scheme Number: TR010055

2.12 Drainage and Surface Water Plans

APFP Regulation 5(2)(o)

Planning Act 2008

**Infrastructure Planning (Applications: Prescribed Forms and
Procedure) Regulations 2009**

Volume 2

November 2022



NOTES
 Purpose of use
APPLICATION SUBMISSION
 Development Consent Order Number / Document
 TR010055/2.12

1. THIS DRAWING HAS BEEN PRODUCED USING CAD SOFTWARE. THEREFORE ALL DIMENSIONS ARE SHOWN IN METRES UNLESS SHOWN OTHERWISE.
 2. DO NOT SCALE FROM THIS DRAWING. USE ONLY PRINTED DIMENSIONS.

KEY TO SYMBOLS
 — DEVELOPMENT CONSENT ORDER BOUNDARY

REV	DATE	REVISION NOTE	ORIG	CHKD	APPD
0	NOVEMBER 2022	APPLICATION SUBMISSION	GP	LC	MF

DESIGNER

CONTRACTOR

CLIENT

PROJECT TITLE
 M3 JUNCTION 9 IMPROVEMENT SCHEME

PROJECT STAGE
 PCF STAGE 3

DRAWING TITLE
 DRAINAGE & SURFACE WATER PLANS
 APPP REGULATION 5(2)(a)
 KEY PLAN
 DOCUMENT REFERENCE: 2.12

SUITABILITY
 APPLICATION SUBMISSION
 SHEET SIZE: A1 SCALE: 1:12,500 STATUS: REV 0
 DRAWING NUMBER
 HES51511-VFK-LSI-X_XXXX_XX-DR-ZL-7000

© Crown copyright and database rights 2022. Use of this data is subject to terms and conditions. Ordnance Survey Licence 100030649.



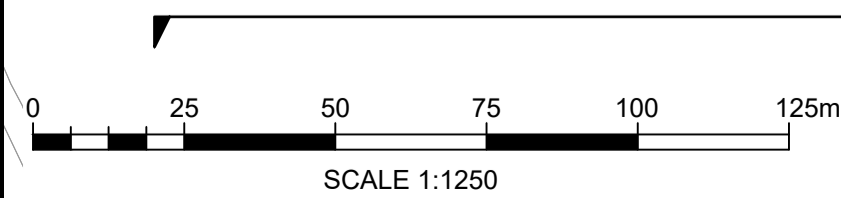
BASINGSTOKE

M3

PRIVATE FARM TRACK

PRIVATE FARM TRACK

FOR CONTINUATION SEE SHEET 2 OF 10



NOTES

Purpose of use
APPLICATION SUBMISSION

Development Consent Order Number / Document
TR010055/2.12

- THIS DRAWING HAS BEEN PRODUCED USING CAD SOFTWARE. THEREFORE ALL DIMENSIONS ARE SHOWN IN METRES UNLESS SHOWN OTHERWISE.
- DO NOT SCALE FROM THIS DRAWING. USE ONLY PRINTED DIMENSIONS.
- THE DESIGN SHOWN WILL BE SUBJECT TO DETAILED DESIGN DEVELOPMENT IN ACCORDANCE WITH THE PROVISIONS OF THE DEVELOPMENT CONSENT ORDER.

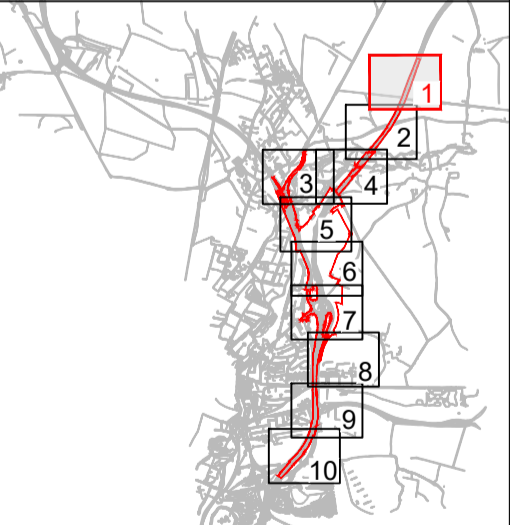
KEY TO SYMBOLS

- DEVELOPMENT CONSENT ORDER BOUNDARY
- LAND NOT INCLUDED IN ORDER LIMITS
- PROPOSED HIGHWAY WORK OUTLINE
- PROPOSED ROAD MARKINGS
- PROPOSED HIGHWAY DRAINAGE NETWORK
- RETAINED EXISTING DRAINAGE
- RIVER ITCHEN
- PROPOSED SURFACE WATER GEOCELLULAR ATTENUATION
- PROPOSED SURFACE WATER INFILTRATION BASIN
- PROPOSED SURFACE WATER LINED BASIN
- PROPOSED SURFACE WATER SWALE
- PROPOSED AREA OF NEW CARRIAGEWAY
- RETAINED EXISTING CARRIAGEWAY AND ASSOCIATED DRAINAGE FEATURES
- U PROPOSED SURFACE WATER HEADWALL / OUTFALL
- PS PROPOSED SURFACE WATER PENSTOCK
- PROPOSED SURFACE WATER SEDIMENT FOREBAY
- EXISTING SURFACE WATER SOAKAWAY FEATURE TO BE REFURBISHED AND REUSED
- FC PROPOSED SURFACE WATER FLOW CONTROL MANHOLE
- v PROPOSED GRASSES BASINS
- X X X EXISTING INFILTRATION FEATURE TO BE ABANDONED

NOTE:
EXACT FORM OF DRAINAGE REQUIRED TO COLLECT SURFACE WATER RUN OFF (E.G. GULLIES, FILTER DRAINS, CONCRETE CHANNELS) WILL BE DETERMINED AT DETAILED DESIGN

REV	DATE	REVISION NOTE	ORIG	CHKD	APPD
0	NOVEMBER 2022	APPLICATION SUBMISSION	GP	LC	MF

REFERENCE MAP



DESIGNER

CONTRACTOR

CLIENT

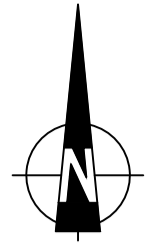
PROJECT TITLE
M3 JUNCTION 9 IMPROVEMENT SCHEME

PROJECT STAGE
PCF STAGE 3

DRAWING TITLE
DRAINAGE & SURFACE WATER PLANS
APPP REGULATION s(2)(a)
SHEET 1 OF 10
DOCUMENT REFERENCE: 2.12

SUITABILITY
APPLICATION SUBMISSION

SHEET SIZE: A1 SCALE: 1:1,250 STATUS: REV 0
DRAWING NUMBER
HE551511-VFK-LSI-X_XXXX_XX-DR-ZL-7001



FOR CONTINUATION SEE SHEET 1 OF 10

ABBOTS WORTHY

B3047

M3

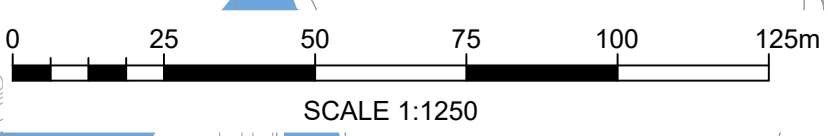
B3047

B3047

RIVER ITCHEN

RIVER ITCHEN

FOR CONTINUATION SEE SHEET 4 OF 10



NOTES

Purpose of use
APPLICATION SUBMISSION

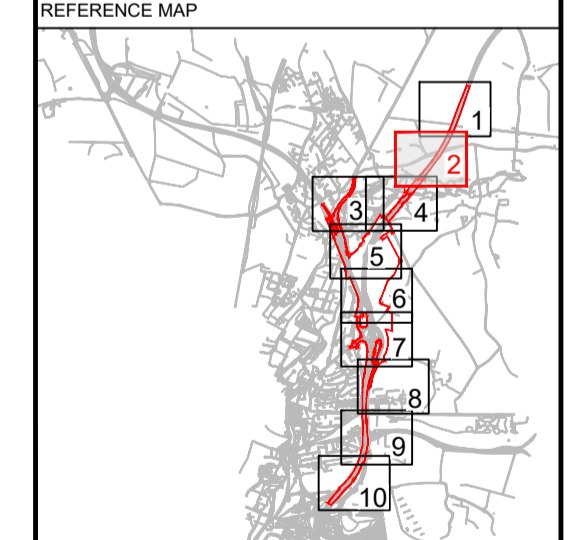
Development Consent Order Number / Document
TR010055/2.12

- THIS DRAWING HAS BEEN PRODUCED USING CAD SOFTWARE. THEREFORE ALL DIMENSIONS ARE SHOWN IN METRES UNLESS SHOWN OTHERWISE.
- DO NOT SCALE FROM THIS DRAWING. USE ONLY PRINTED DIMENSIONS.
- THE DESIGN SHOWN WILL BE SUBJECT TO DETAILED DESIGN DEVELOPMENT IN ACCORDANCE WITH THE PROVISIONS OF THE DEVELOPMENT CONSENT ORDER.

- KEY TO SYMBOLS
- DEVELOPMENT CONSENT ORDER BOUNDARY
 - LAND NOT INCLUDED IN ORDER LIMITS
 - PROPOSED HIGHWAY WORK OUTLINE
 - PROPOSED ROAD MARKINGS
 - PROPOSED HIGHWAY DRAINAGE NETWORK
 - RETAINED EXISTING DRAINAGE
 - RIVER ITCHEN
 - PROPOSED SURFACE WATER GEOCELLULAR ATTENUATION
 - PROPOSED SURFACE WATER INFILTRATION BASIN
 - PROPOSED SURFACE WATER LINED BASIN
 - PROPOSED SURFACE WATER SWALE
 - PROPOSED AREA OF NEW CARRIAGEWAY
 - RETAINED EXISTING CARRIAGEWAY AND ASSOCIATED DRAINAGE FEATURES
 - PROPOSED SURFACE WATER HEADWALL / OUTFALL
 - PROPOSED SURFACE WATER PENSTOCK
 - PROPOSED SURFACE WATER SEDIMENT FOREBAY
 - EXISTING SURFACE WATER SOAKAWAY FEATURE TO BE REFURBISHED AND REUSED
 - PROPOSED SURFACE WATER FLOW CONTROL MANHOLE
 - PROPOSED GRASSED BASINS
 - EXISTING INFILTRATION FEATURE TO BE ABANDONED

NOTE:
EXACT FORM OF DRAINAGE REQUIRED TO COLLECT SURFACE WATER RUN OFF (E.G. GULLIES, FILTER DRAINS, CONCRETE CHANNELS) WILL BE DETERMINED AT DETAILED DESIGN

REV	DATE	REVISION NOTE	ORIG	CHKD	APPD
0	NOVEMBER 2022	APPLICATION SUBMISSION	GP	LC	MF



DESIGNER

CONTRACTOR

CLIENT

PROJECT TITLE
M3 JUNCTION 9 IMPROVEMENT SCHEME

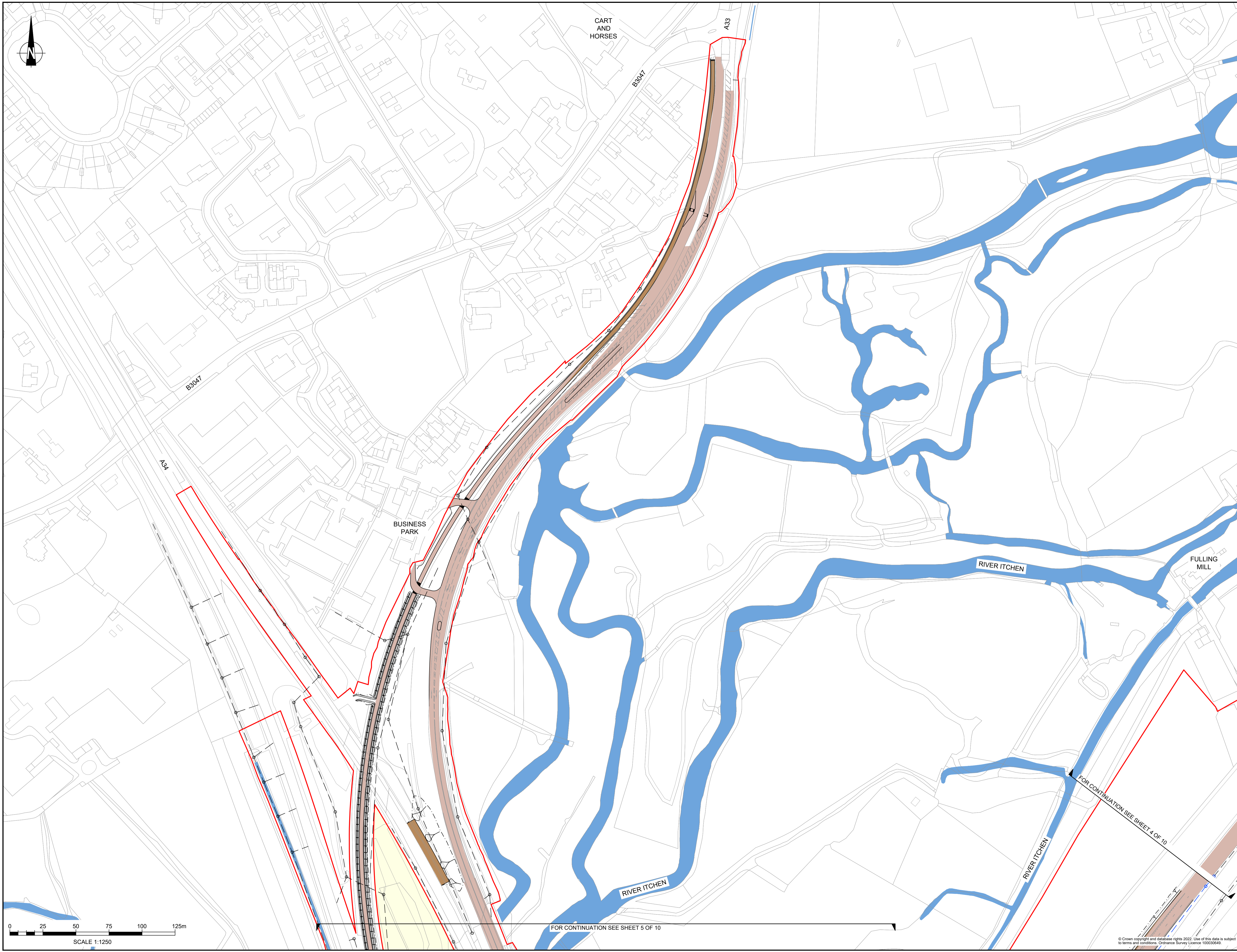
PROJECT STAGE
PCF STAGE 3

DRAWING TITLE
DRAINAGE & SURFACE WATER PLANS
APFP REGULATION s(2)(a)
SHEET 2 OF 10
DOCUMENT REFERENCE: 2.12

SUITABILITY
APPLICATION SUBMISSION

SHEET SIZE: A1 SCALE: 1:1,250 STATUS: REV 0
DRAWING NUMBER
HES51511-VFK-LSI-X_XXXX_XX-DR-ZL-7002

© Crown copyright and database rights 2022. Use of this data is subject to terms and conditions. Ordnance Survey Licence 100030649



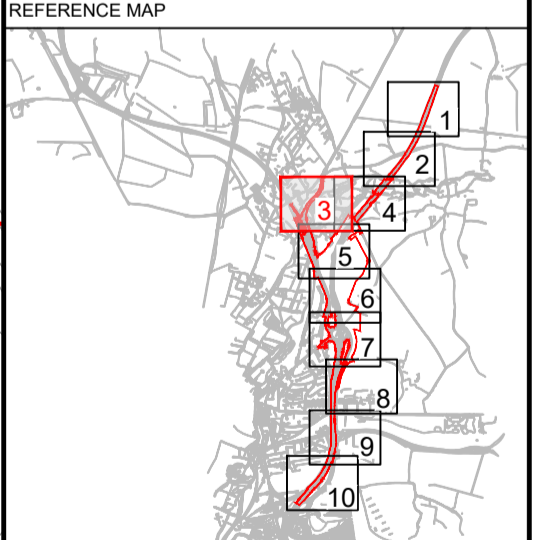
NOTES
 Purpose of use
APPLICATION SUBMISSION
 Development Consent Order Number / Document
 TR010055/2.12

- THIS DRAWING HAS BEEN PRODUCED USING CAD SOFTWARE. THEREFORE ALL DIMENSIONS ARE SHOWN IN METRES UNLESS SHOWN OTHERWISE.
- DO NOT SCALE FROM THIS DRAWING. USE ONLY PRINTED DIMENSIONS.
- THE DESIGN SHOWN WILL BE SUBJECT TO DETAILED DESIGN DEVELOPMENT IN ACCORDANCE WITH THE PROVISIONS OF THE DEVELOPMENT CONSENT ORDER.

- KEY TO SYMBOLS**
- DEVELOPMENT CONSENT ORDER BOUNDARY
 - LAND NOT INCLUDED IN ORDER LIMITS
 - PROPOSED HIGHWAY WORK OUTLINE
 - PROPOSED ROAD MARKINGS
 - PROPOSED HIGHWAY DRAINAGE NETWORK
 - RETAINED EXISTING DRAINAGE
 - RIVER ITCHEN
 - PROPOSED SURFACE WATER GEOCELLULAR ATTENUATION
 - PROPOSED SURFACE WATER INFILTRATION BASIN
 - PROPOSED SURFACE WATER LINED BASIN
 - PROPOSED SURFACE WATER SWALE
 - PROPOSED AREA OF NEW CARRIAGEWAY
 - RETAINED EXISTING CARRIAGEWAY AND ASSOCIATED DRAINAGE FEATURES
 - PROPOSED SURFACE WATER HEADWALL / OUTFALL
 - PS PROPOSED SURFACE WATER PENSTOCK
 - PROPOSED SURFACE WATER SEDIMENT FOREBAY
 - EXISTING SURFACE WATER SOAKAWAY FEATURE TO BE REFURBISHED AND REUSED
 - FC PROPOSED SURFACE WATER FLOW CONTROL MANHOLE
 - PROPOSED GRASSED BASINS
 - X X X EXISTING INFILTRATION FEATURE TO BE ABANDONED

NOTE:
 EXACT FORM OF DRAINAGE REQUIRED TO COLLECT SURFACE WATER RUN OFF (E.G. GULLIES, FILTER DRAINS, CONCRETE CHANNELS) WILL BE DETERMINED AT DETAILED DESIGN

REV	DATE	REVISION NOTE	ORIG	CHKD	APPD
0	NOVEMBER 2022	APPLICATION SUBMISSION	GP	LC	MF



DESIGNER

CONTRACTOR

CLIENT

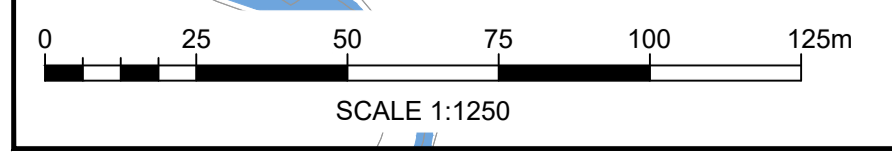
PROJECT TITLE
 M3 JUNCTION 9 IMPROVEMENT SCHEME

PROJECT STAGE
 PCF STAGE 3

DRAWING TITLE
 DRAINAGE & SURFACE WATER PLANS
 APPFP REGULATION s(2)(c)
 SHEET 3 OF 10
 DOCUMENT REFERENCE: 2.12

SUITABILITY
 APPLICATION SUBMISSION

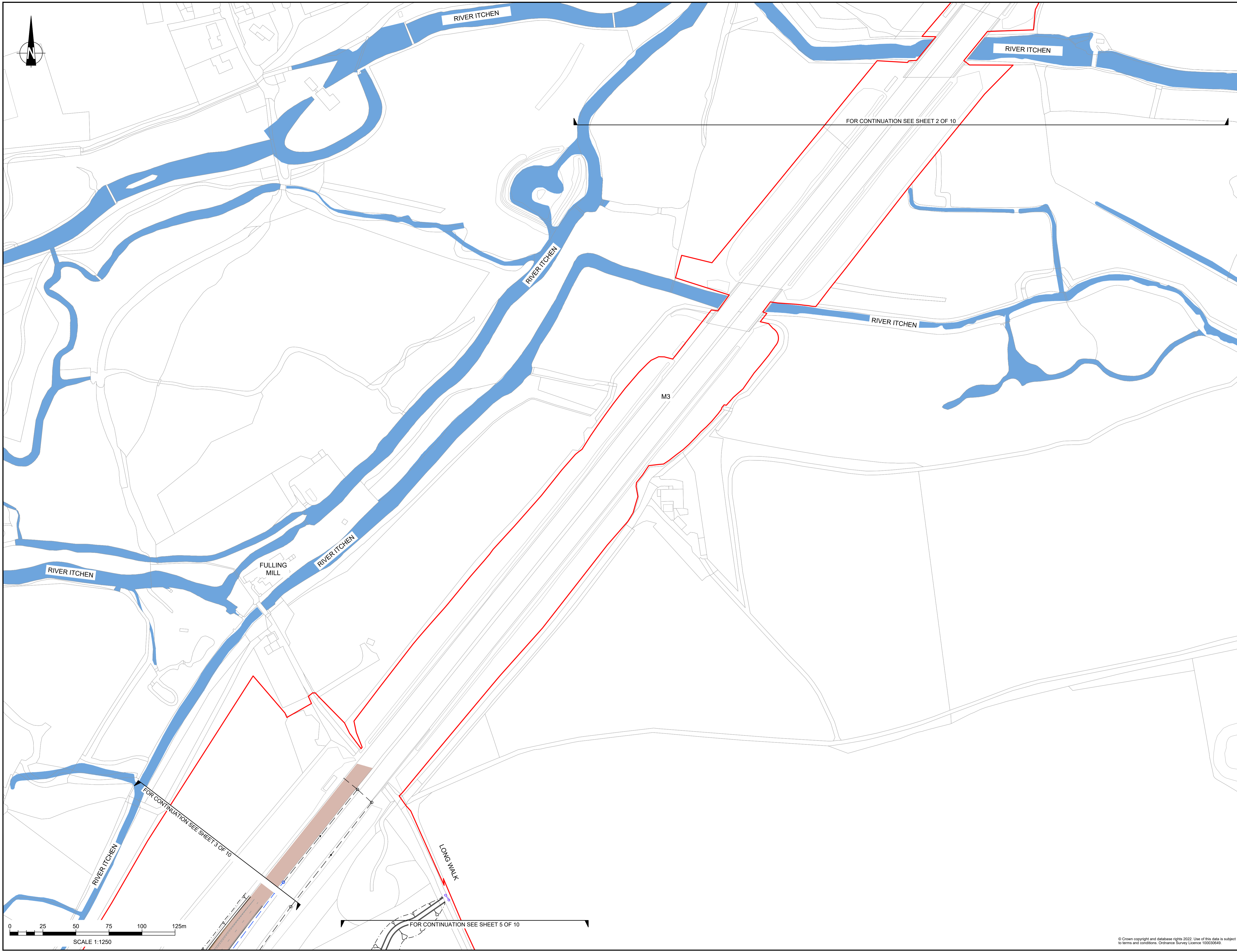
SHEET SIZE: A1 SCALE: 1:1,250 STATUS: REV 0
 DRAWING NUMBER
 HES51511-VFK-LSI-X_XXXX_XX-DR-ZL-7003



FOR CONTINUATION SEE SHEET 5 OF 10

FOR CONTINUATION SEE SHEET 4 OF 10

© Crown copyright and database rights 2022. Use of this data is subject to terms and conditions. Ordnance Survey Licence: 10003049.



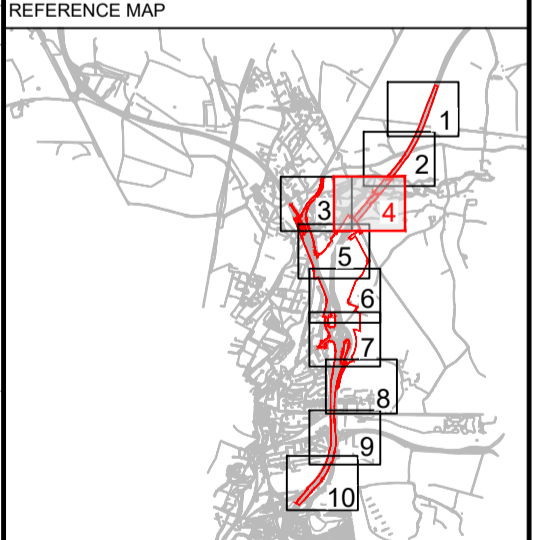
NOTES
 Purpose of use
APPLICATION SUBMISSION
 Development Consent Order Number / Document
 TR010055/2.12

- THIS DRAWING HAS BEEN PRODUCED USING CAD SOFTWARE. THEREFORE ALL DIMENSIONS ARE SHOWN IN METRES UNLESS SHOWN OTHERWISE.
- DO NOT SCALE FROM THIS DRAWING. USE ONLY PRINTED DIMENSIONS.
- THE DESIGN SHOWN WILL BE SUBJECT TO DETAILED DESIGN DEVELOPMENT IN ACCORDANCE WITH THE PROVISIONS OF THE DEVELOPMENT CONSENT ORDER.

- KEY TO SYMBOLS
- DEVELOPMENT CONSENT ORDER BOUNDARY
 - LAND NOT INCLUDED IN ORDER LIMITS
 - PROPOSED HIGHWAY WORK OUTLINE
 - PROPOSED ROAD MARKINGS
 - PROPOSED HIGHWAY DRAINAGE NETWORK
 - RETAINED EXISTING DRAINAGE
 - RIVER ITCHEN
 - PROPOSED SURFACE WATER GEOCELLULAR ATTENUATION
 - PROPOSED SURFACE WATER INFILTRATION BASIN
 - PROPOSED SURFACE WATER LINED BASIN
 - PROPOSED SURFACE WATER SWALE
 - PROPOSED AREA OF NEW CARRIAGEWAY
 - RETAINED EXISTING CARRIAGEWAY AND ASSOCIATED DRAINAGE FEATURES
 - PROPOSED SURFACE WATER HEADWALL / OUTFALL
 - PROPOSED SURFACE WATER PENSTOCK
 - PROPOSED SURFACE WATER SEDIMENT FOREBAY
 - EXISTING SURFACE WATER SOAKAWAY FEATURE TO BE REFURBISHED AND REUSED
 - PROPOSED SURFACE WATER FLOW CONTROL MANHOLE
 - PROPOSED GRASSED BASINS
 - EXISTING INFILTRATION FEATURE TO BE ABANDONED

NOTE:
 EXACT FORM OF DRAINAGE REQUIRED TO COLLECT SURFACE WATER RUN OFF (E.G. GULLIES, FILTER DRAINS, CONCRETE CHANNELS) WILL BE DETERMINED AT DETAILED DESIGN

REV	DATE	REVISION NOTE	ORIG	CHKD	APPD
0	NOVEMBER 2022	APPLICATION SUBMISSION	GP	LC	MF



DESIGNER

CONTRACTOR

CLIENT

PROJECT TITLE
 M3 JUNCTION 9 IMPROVEMENT SCHEME

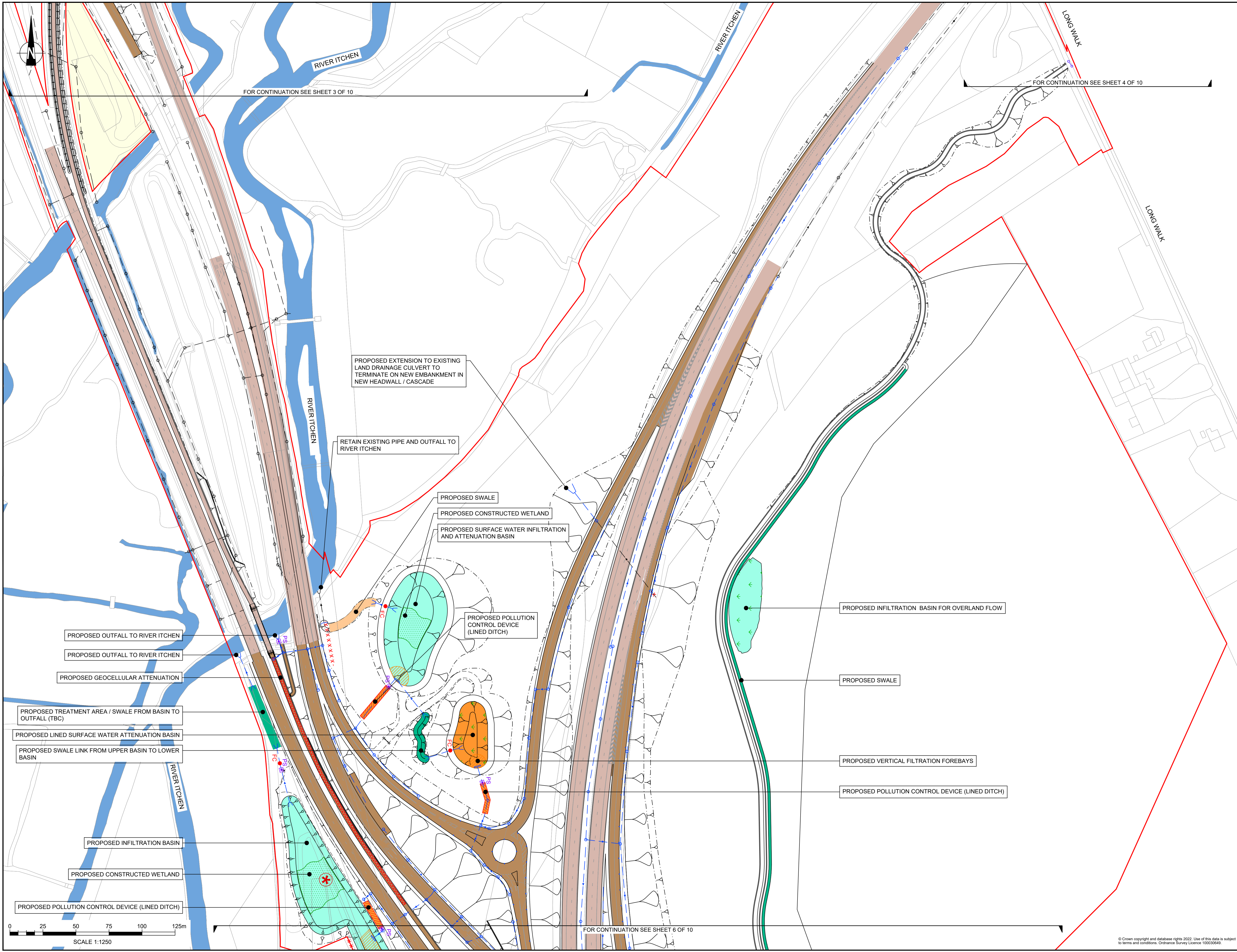
PROJECT STAGE
 PCF STAGE 3

DRAWING TITLE
 DRAINAGE & SURFACE WATER PLANS
 APFP REGULATION s(2)(a)
 SHEET 4 OF 10
 DOCUMENT REFERENCE: 2.12

SUITABILITY
 APPLICATION SUBMISSION

SHEET SIZE: A1 SCALE: 1:1250 STATUS: REV 0
 DRAWING NUMBER
 HES51511-VFK-LSI-X_XXXX_XX-DR-ZL-7004

© Crown copyright and database rights 2022. Use of this data is subject to terms and conditions. Ordnance Survey Licence 100030649.



FOR CONTINUATION SEE SHEET 3 OF 10

FOR CONTINUATION SEE SHEET 4 OF 10

PROPOSED EXTENSION TO EXISTING LAND DRAINAGE CULVERT TO TERMINATE ON NEW EMBANKMENT IN NEW HEADWALL / CASCADE

RETAIN EXISTING PIPE AND OUTFALL TO RIVER ITCHEN

PROPOSED SWALE

PROPOSED CONSTRUCTED WETLAND

PROPOSED SURFACE WATER INFILTRATION AND ATTENUATION BASIN

PROPOSED POLLUTION CONTROL DEVICE (LINED DITCH)

PROPOSED INFILTRATION BASIN FOR OVERLAND FLOW

PROPOSED OUTFALL TO RIVER ITCHEN

PROPOSED OUTFALL TO RIVER ITCHEN

PROPOSED GEOCELLULAR ATTENUATION

PROPOSED TREATMENT AREA / SWALE FROM BASIN TO OUTFALL (TBC)

PROPOSED LINED SURFACE WATER ATTENUATION BASIN

PROPOSED SWALE LINK FROM UPPER BASIN TO LOWER BASIN

PROPOSED SWALE

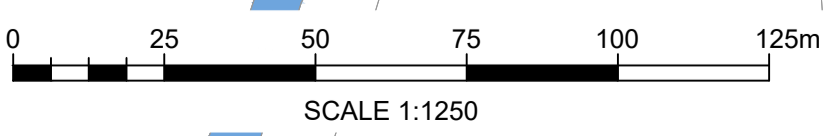
PROPOSED VERTICAL FILTRATION FOREBAYS

PROPOSED POLLUTION CONTROL DEVICE (LINED DITCH)

PROPOSED INFILTRATION BASIN

PROPOSED CONSTRUCTED WETLAND

PROPOSED POLLUTION CONTROL DEVICE (LINED DITCH)



FOR CONTINUATION SEE SHEET 6 OF 10

NOTES

Purpose of use
APPLICATION SUBMISSION
 Development Consent Order Number / Document
 TR010055/2.12

- THIS DRAWING HAS BEEN PRODUCED USING CAD SOFTWARE. THEREFORE ALL DIMENSIONS ARE SHOWN IN METRES UNLESS SHOWN OTHERWISE.
- DO NOT SCALE FROM THIS DRAWING. USE ONLY PRINTED DIMENSIONS.
- THE DESIGN SHOWN WILL BE SUBJECT TO DETAILED DESIGN DEVELOPMENT IN ACCORDANCE WITH THE PROVISIONS OF THE DEVELOPMENT CONSENT ORDER.

KEY TO SYMBOLS

- DEVELOPMENT CONSENT ORDER BOUNDARY
- LAND NOT INCLUDED IN ORDER LIMITS
- PROPOSED HIGHWAY WORK OUTLINE
- PROPOSED ROAD MARKINGS
- PROPOSED HIGHWAY DRAINAGE NETWORK
- RETAINED EXISTING DRAINAGE
- RIVER ITCHEN
- PROPOSED SURFACE WATER GEOCELLULAR ATTENUATION
- PROPOSED SURFACE WATER INFILTRATION BASIN
- PROPOSED SURFACE WATER LINED BASIN
- PROPOSED SURFACE WATER SWALE
- PROPOSED AREA OF NEW CARRIAGEWAY
- RETAINED EXISTING CARRIAGEWAY AND ASSOCIATED DRAINAGE FEATURES
- PROPOSED SURFACE WATER HEADWALL / OUTFALL
- PROPOSED SURFACE WATER PENSTOCK
- PROPOSED SURFACE WATER SEDIMENT FOREBAY
- EXISTING SURFACE WATER SOAKAWAY FEATURE TO BE REFURBISHED AND REUSED
- PROPOSED SURFACE WATER FLOW CONTROL MANHOLE
- PROPOSED GRASSED BASINS
- EXISTING INFILTRATION FEATURE TO BE ABANDONED

NOTE:
 EXACT FORM OF DRAINAGE REQUIRED TO COLLECT SURFACE WATER RUN OFF (E.G. GULLIES, FILTER DRAINS, CONCRETE CHANNELS) WILL BE DETERMINED AT DETAILED DESIGN

REV	DATE	REVISION NOTE	ORIG	CHKD	APPD
0	NOVEMBER 2022	APPLICATION SUBMISSION	GP	LC	MF

REFERENCE MAP

DESIGNER
Stantec

CONTRACTOR
VolkerFitzpatrick

CLIENT
national highways

PROJECT TITLE
 M3 JUNCTION 9 IMPROVEMENT SCHEME

PROJECT STAGE
 PCF STAGE 3

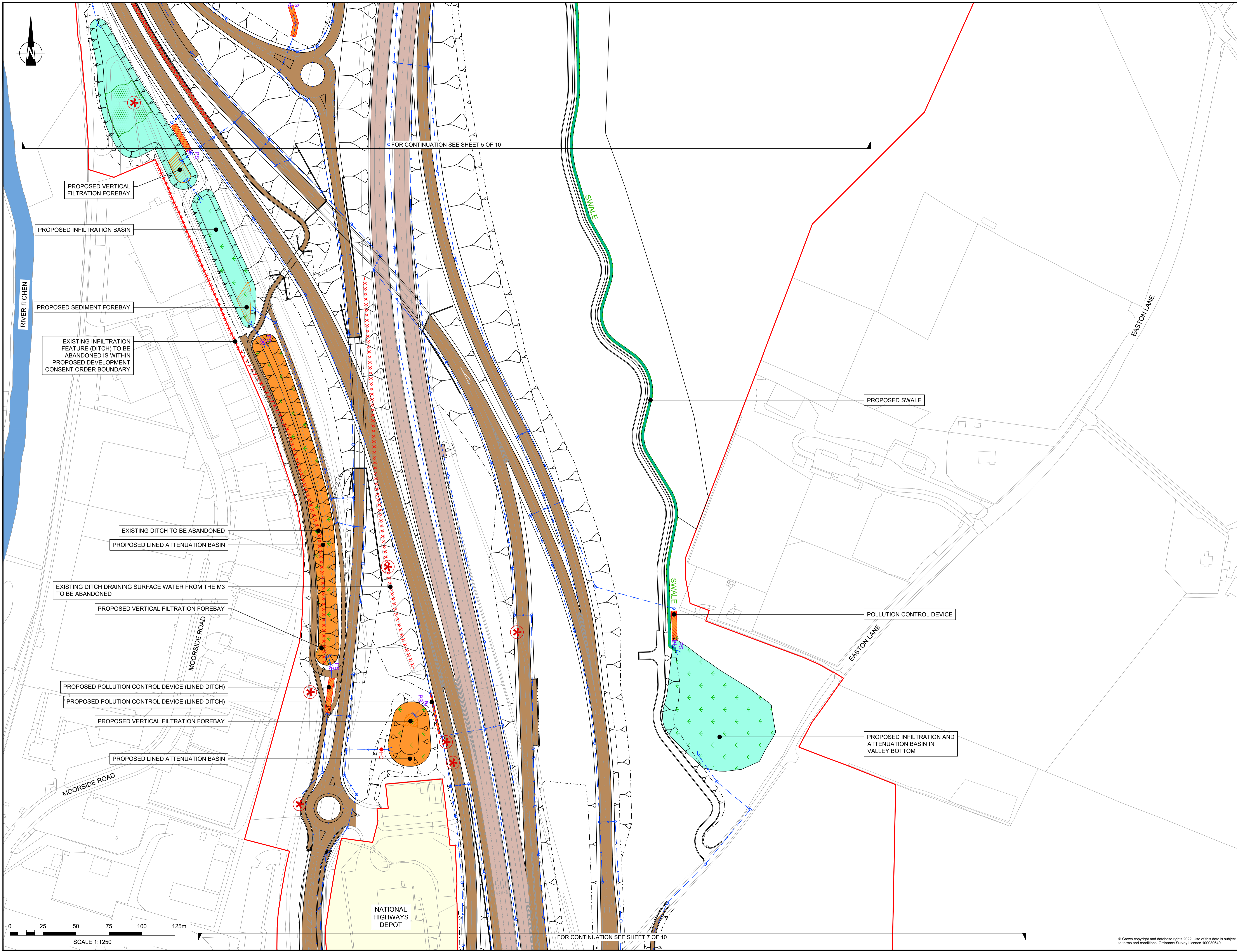
DRAWING TITLE
 DRAINAGE & SURFACE WATER PLANS
 APFP REGULATION s(2)(a)
 SHEET 5 OF 10
 DOCUMENT REFERENCE: 2.12

SUITABILITY
 APPLICATION SUBMISSION

SHEET SIZE: A1 SCALE: 1:1250 STATUS: REV 0

DRAWING NUMBER
 HES51511-VFK-LSI-X_XXXX_XX-DR-ZL-7005

© Crown copyright and database rights 2022. Use of this data is subject to terms and conditions. Ordnance Survey Licence 100030649.



FOR CONTINUATION SEE SHEET 5 OF 10

FOR CONTINUATION SEE SHEET 7 OF 10

NOTES

APPLICATION SUBMISSION

Development Consent Order Number / Document
TR010055/2.12

- THIS DRAWING HAS BEEN PRODUCED USING CAD SOFTWARE. THEREFORE ALL DIMENSIONS ARE SHOWN IN METRES UNLESS SHOWN OTHERWISE.
- DO NOT SCALE FROM THIS DRAWING. USE ONLY PRINTED DIMENSIONS.
- THE DESIGN SHOWN WILL BE SUBJECT TO DETAILED DESIGN DEVELOPMENT IN ACCORDANCE WITH THE PROVISIONS OF THE DEVELOPMENT CONSENT ORDER.

KEY TO SYMBOLS

- DEVELOPMENT CONSENT ORDER BOUNDARY
- LAND NOT INCLUDED IN ORDER LIMITS
- PROPOSED HIGHWAY WORK OUTLINE
- PROPOSED ROAD MARKINGS
- PROPOSED HIGHWAY DRAINAGE NETWORK
- RETAINED EXISTING DRAINAGE
- RIVER ITCHEN
- PROPOSED SURFACE WATER GEOCELLULAR ATTENUATION
- PROPOSED SURFACE WATER INFILTRATION BASIN
- PROPOSED SURFACE WATER LINED BASIN
- PROPOSED SURFACE WATER SWALE
- PROPOSED AREA OF NEW CARRIAGEWAY AND ASSOCIATED DRAINAGE FEATURES
- RETAINED EXISTING CARRIAGEWAY AND ASSOCIATED DRAINAGE FEATURES
- PROPOSED SURFACE WATER HEADWALL / OUTFALL
- PROPOSED SURFACE WATER PENSTOCK
- PROPOSED SURFACE WATER SEDIMENT FOREBAY
- EXISTING SURFACE WATER SOAKAWAY FEATURE TO BE REFURBISHED AND REUSED
- PROPOSED SURFACE WATER FLOW CONTROL MANHOLE
- PROPOSED GRASSED BASINS
- EXISTING INFILTRATION FEATURE TO BE ABANDONED

NOTE:
EXACT FORM OF DRAINAGE REQUIRED TO COLLECT SURFACE WATER RUN OFF (E.G. GULLIES, FILTER DRAINS, CONCRETE CHANNELS) WILL BE DETERMINED AT DETAILED DESIGN

REV	DATE	REVISION NOTE	ORIG	CHKD	APPD
0	NOVEMBER 2022	APPLICATION SUBMISSION	GP	LC	MF

REFERENCE MAP

DESIGNER
Stantec

CONTRACTOR
VolkerFitzpatrick

CLIENT
national highways

PROJECT TITLE
M3 JUNCTION 9 IMPROVEMENT SCHEME

PROJECT STAGE
PCF STAGE 3

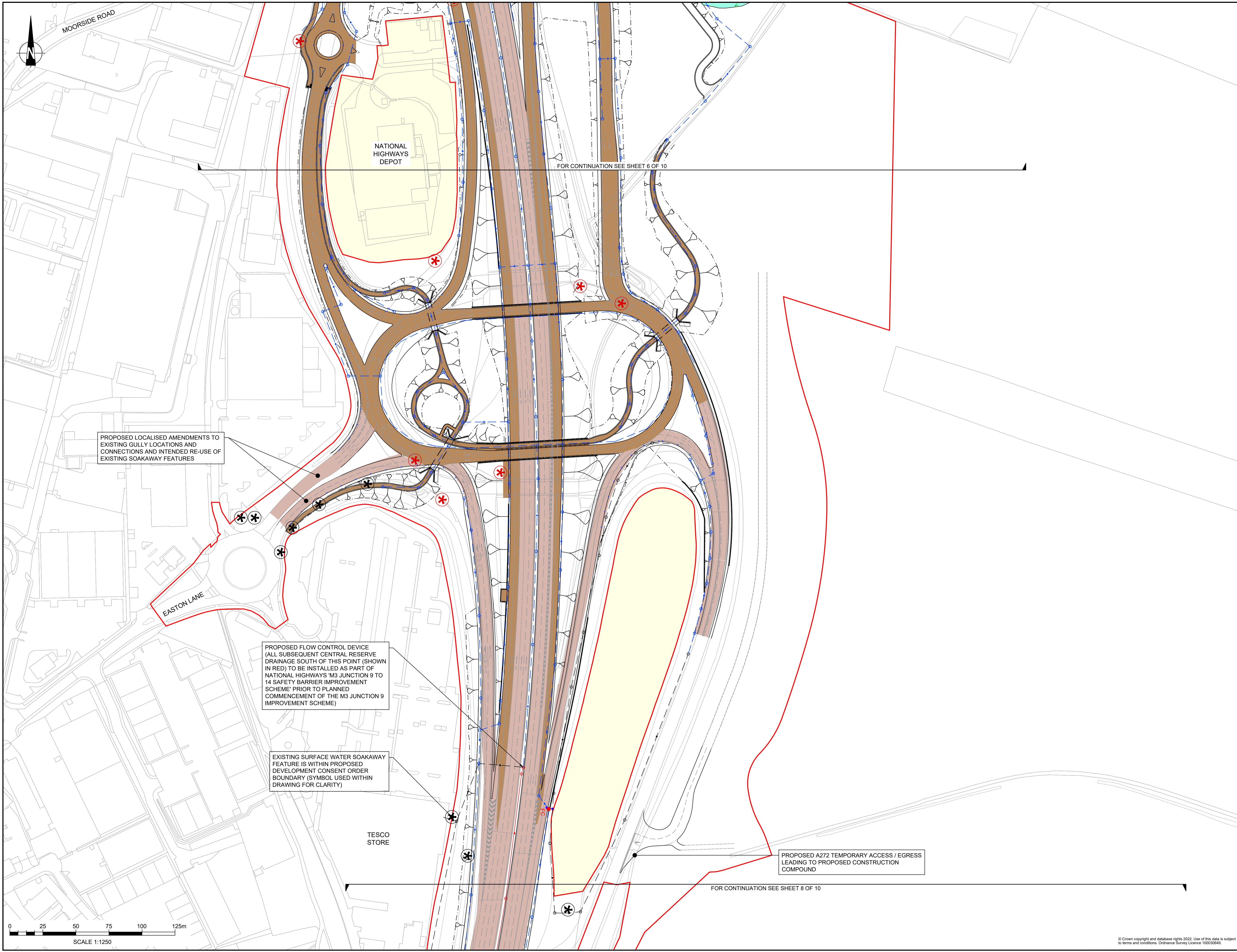
DRAWING TITLE
DRAINAGE & SURFACE WATER PLANS
APPP REGULATION s(2)(c)
SHEET 6 OF 10
DOCUMENT REFERENCE: 2.12

SUITABILITY
APPLICATION SUBMISSION

SHEET SIZE: A1 SCALE: 1:1,250 STATUS: REV 0

DRAWING NUMBER
HES51511-VFK-LSI-X_XXXX_XX-DR-ZL-7006

© Crown copyright and database rights 2022. Use of this data is subject to terms and conditions. Ordnance Survey Licence 100030649



FOR CONTINUATION SEE SHEET 6 OF 10

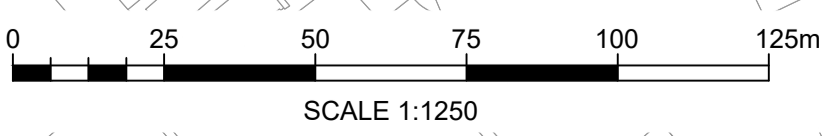
FOR CONTINUATION SEE SHEET 8 OF 10

PROPOSED LOCALISED AMENDMENTS TO EXISTING GULLY LOCATIONS AND CONNECTIONS AND INTENDED RE-USE OF EXISTING SOAKAWAY FEATURES

PROPOSED FLOW CONTROL DEVICE (ALL SUBSEQUENT CENTRAL RESERVE DRAINAGE SOUTH OF THIS POINT (SHOWN IN RED) TO BE INSTALLED AS PART OF NATIONAL HIGHWAYS 'M3 JUNCTION 9 TO 14 SAFETY BARRIER IMPROVEMENT SCHEME' PRIOR TO PLANNED COMMENCEMENT OF THE M3 JUNCTION 9 IMPROVEMENT SCHEME)

EXISTING SURFACE WATER SOAKAWAY FEATURE IS WITHIN PROPOSED DEVELOPMENT CONSENT ORDER BOUNDARY (SYMBOL USED WITHIN DRAWING FOR CLARITY)

PROPOSED A272 TEMPORARY ACCESS / EGRESS LEADING TO PROPOSED CONSTRUCTION COMPOUND

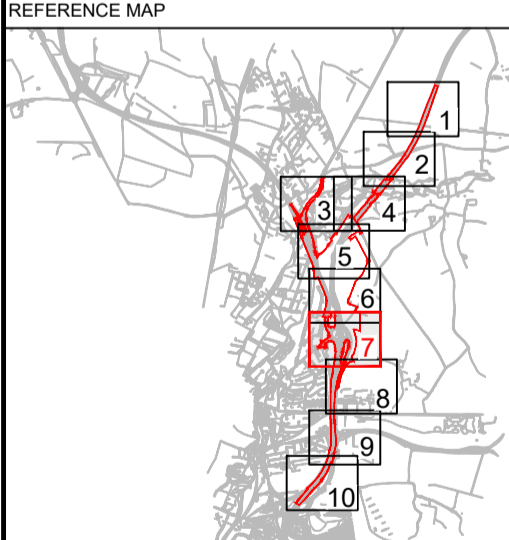


NOTES
 Purpose of use
APPLICATION SUBMISSION
 Development Consent Order Number / Document
 TR010055/2.12

- KEY TO SYMBOLS
- DEVELOPMENT CONSENT ORDER BOUNDARY
 - LAND NOT INCLUDED IN ORDER LIMITS
 - PROPOSED HIGHWAY WORK OUTLINE
 - PROPOSED ROAD MARKINGS
 - PROPOSED HIGHWAY DRAINAGE NETWORK
 - RETAINED EXISTING DRAINAGE
 - RIVER ITCHEN
 - PROPOSED SURFACE WATER GEOCELLULAR ATTENUATION
 - PROPOSED SURFACE WATER INFILTRATION BASIN
 - PROPOSED SURFACE WATER LINED BASIN
 - PROPOSED SURFACE WATER SWALE
 - PROPOSED AREA OF NEW CARRIAGEWAY
 - RETAINED EXISTING CARRIAGEWAY AND ASSOCIATED DRAINAGE FEATURES
 - V PROPOSED SURFACE WATER HEADWALL / OUTFALL
 - PS PROPOSED SURFACE WATER PENSTOCK
 - PROPOSED SURFACE WATER SEDIMENT FOREBAY
 - X EXISTING SURFACE WATER SOAKAWAY FEATURE TO BE REFURBISHED AND REUSED
 - FC PROPOSED SURFACE WATER FLOW CONTROL MANHOLE
 - G PROPOSED GRASSED BASINS
 - X-X- EXISTING INFILTRATION FEATURE TO BE ABANDONED

NOTE:
 EXACT FORM OF DRAINAGE REQUIRED TO COLLECT SURFACE WATER RUN OFF (E.G. GULLIES, FILTER DRAINS, CONCRETE CHANNELS) WILL BE DETERMINED AT DETAILED DESIGN

REV	DATE	REVISION NOTE	ORIG	CHKD	APPD
0	NOVEMBER 2022	APPLICATION SUBMISSION	GP	LC	MF



DESIGNER

CONTRACTOR

CLIENT

PROJECT TITLE
 M3 JUNCTION 9 IMPROVEMENT SCHEME

PROJECT STAGE
 PCF STAGE 3

DRAWING TITLE
 DRAINAGE & SURFACE WATER PLANS
 APPFP REGULATION s(2)(o)
 SHEET 7 OF 10
 DOCUMENT REFERENCE: 2.12

SUITABILITY
 APPLICATION SUBMISSION
 SHEET SIZE: A1 SCALE: 1:1,250 STATUS: REV 0
 DRAWING NUMBER
 HES51511-VFK-LSI-X_XXXX_XX-DR-ZL-7007

© Crown copyright and database rights 2022. Use of this data is subject to terms and conditions. Ordnance Survey Licence 100030649

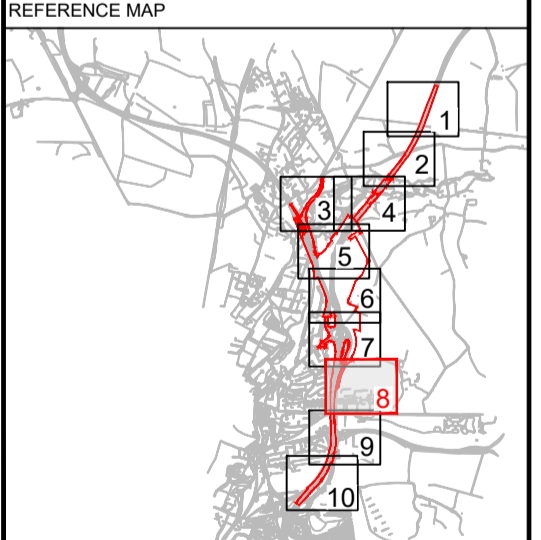


NOTES
 Purpose of use
APPLICATION SUBMISSION
 Development Consent Order Number / Document
TR010055/2.12
 1. THIS DRAWING HAS BEEN PRODUCED USING CAD SOFTWARE. THEREFORE ALL DIMENSIONS ARE SHOWN IN METRES UNLESS SHOWN OTHERWISE.
 2. DO NOT SCALE FROM THIS DRAWING. USE ONLY PRINTED DIMENSIONS.
 3. THE DESIGN SHOWN WILL BE SUBJECT TO DETAILED DESIGN DEVELOPMENT IN ACCORDANCE WITH THE PROVISIONS OF THE DEVELOPMENT CONSENT ORDER.

- KEY TO SYMBOLS
- DEVELOPMENT CONSENT ORDER BOUNDARY
 - LAND NOT INCLUDED IN ORDER LIMITS
 - PROPOSED HIGHWAY WORK OUTLINE
 - PROPOSED ROAD MARKINGS
 - PROPOSED HIGHWAY DRAINAGE NETWORK
 - RETAINED EXISTING DRAINAGE
 - RIVER ITCHEN
 - PROPOSED SURFACE WATER GEOCELLULAR ATTENUATION
 - PROPOSED SURFACE WATER INFILTRATION BASIN
 - PROPOSED SURFACE WATER LINED BASIN
 - PROPOSED SURFACE WATER SWALE
 - PROPOSED AREA OF NEW CARRIAGEWAY
 - RETAINED EXISTING CARRIAGEWAY AND ASSOCIATED DRAINAGE FEATURES
 - V PROPOSED SURFACE WATER HEADWALL / OUTFALL
 - PS PROPOSED SURFACE WATER PENSTOCK
 - PROPOSED SURFACE WATER SEDIMENT FOREBAY
 - ⊗ EXISTING SURFACE WATER SOAKAWAY FEATURE TO BE REFURBISHED AND REUSED
 - PROPOSED SURFACE WATER FLOW CONTROL MANHOLE
 - ∨ PROPOSED GRASSED BASINS
 - X-X- EXISTING INFILTRATION FEATURE TO BE ABANDONED

NOTE:
 EXACT FORM OF DRAINAGE REQUIRED TO COLLECT SURFACE WATER RUN OFF (E.G. GULLIES, FILTER DRAINS, CONCRETE CHANNELS) WILL BE DETERMINED AT DETAILED DESIGN

REV	DATE	REVISION NOTE	ORIG	CHKD	APPD
0	NOVEMBER 2022	APPLICATION SUBMISSION	GP	LC	MF



DESIGNER

CONTRACTOR

CLIENT

PROJECT TITLE
 M3 JUNCTION 9 IMPROVEMENT SCHEME

PROJECT STAGE
 PCF STAGE 3

DRAWING TITLE
 DRAINAGE & SURFACE WATER PLANS
 APPF REGULATION s(2)(a)
 SHEET 8 OF 10
 DOCUMENT REFERENCE: 2.12

SUITABILITY
 APPLICATION SUBMISSION
 SHEET SIZE: A1 SCALE: 1:1250 STATUS: REV 0
 DRAWING NUMBER
 HES51511-VFK-LSI-X_XXXX_XX-DR-ZL-7008

© Crown copyright and database rights 2022. Use of this data is subject to terms and conditions. Ordnance Survey Licence 100030649

NOTES

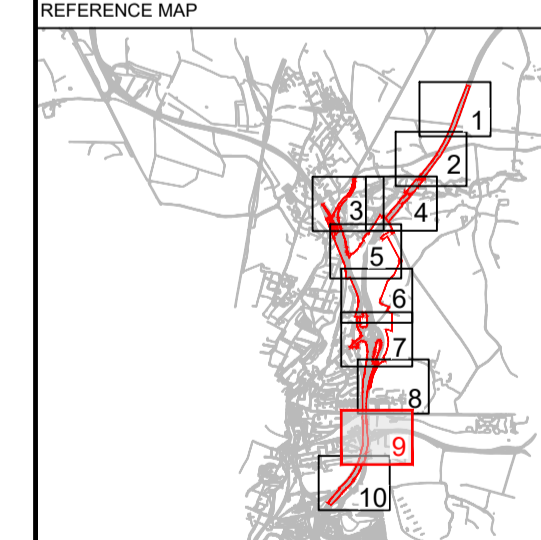
Purpose of use
APPLICATION SUBMISSION
 Development Consent Order Number / Document
TR010055/2.12

- THIS DRAWING HAS BEEN PRODUCED USING CAD SOFTWARE. THEREFORE ALL DIMENSIONS ARE SHOWN IN METRES UNLESS SHOWN OTHERWISE.
- DO NOT SCALE FROM THIS DRAWING. USE ONLY PRINTED DIMENSIONS.
- THE DESIGN SHOWN WILL BE SUBJECT TO DETAILED DESIGN DEVELOPMENT IN ACCORDANCE WITH THE PROVISIONS OF THE DEVELOPMENT CONSENT ORDER.

- KEY TO SYMBOLS
- DEVELOPMENT CONSENT ORDER BOUNDARY
 - LAND NOT INCLUDED IN ORDER LIMITS
 - PROPOSED HIGHWAY WORK OUTLINE
 - PROPOSED ROAD MARKINGS
 - PROPOSED HIGHWAY DRAINAGE NETWORK
 - RETAINED EXISTING DRAINAGE
 - RIVER ITCHEN
 - PROPOSED SURFACE WATER GEOCELLULAR ATTENUATION
 - PROPOSED SURFACE WATER INFILTRATION BASIN
 - PROPOSED SURFACE WATER LINED BASIN
 - PROPOSED SURFACE WATER SWALE
 - PROPOSED AREA OF NEW CARRIAGEWAY
 - RETAINED EXISTING CARRIAGEWAY AND ASSOCIATED DRAINAGE FEATURES
 - PROPOSED SURFACE WATER HEADWALL / OUTFALL
 - PROPOSED SURFACE WATER PENSTOCK
 - PROPOSED SURFACE WATER SEDIMENT FOREBAY
 - EXISTING SURFACE WATER SOAKAWAY FEATURE TO BE REFURBISHED AND REUSED
 - PROPOSED SURFACE WATER FLOW CONTROL MANHOLE
 - PROPOSED GRASSES BASINS
 - EXISTING INFILTRATION FEATURE TO BE ABANDONED

NOTE:
 EXACT FORM OF DRAINAGE REQUIRED TO COLLECT SURFACE WATER RUN OFF (E.G. GULLIES, FILTER DRAINS, CONCRETE CHANNELS) WILL BE DETERMINED AT DETAILED DESIGN

REV	DATE	REVISION NOTE	ORIG	CHKD	APPD
0	NOVEMBER 2022	APPLICATION SUBMISSION	GP	LC	MF



DESIGNER

CONTRACTOR

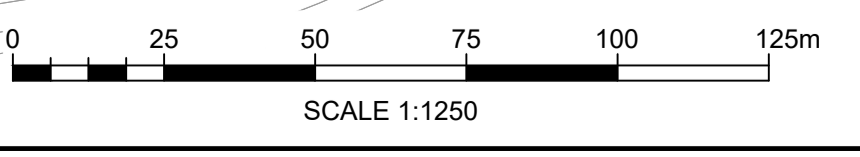
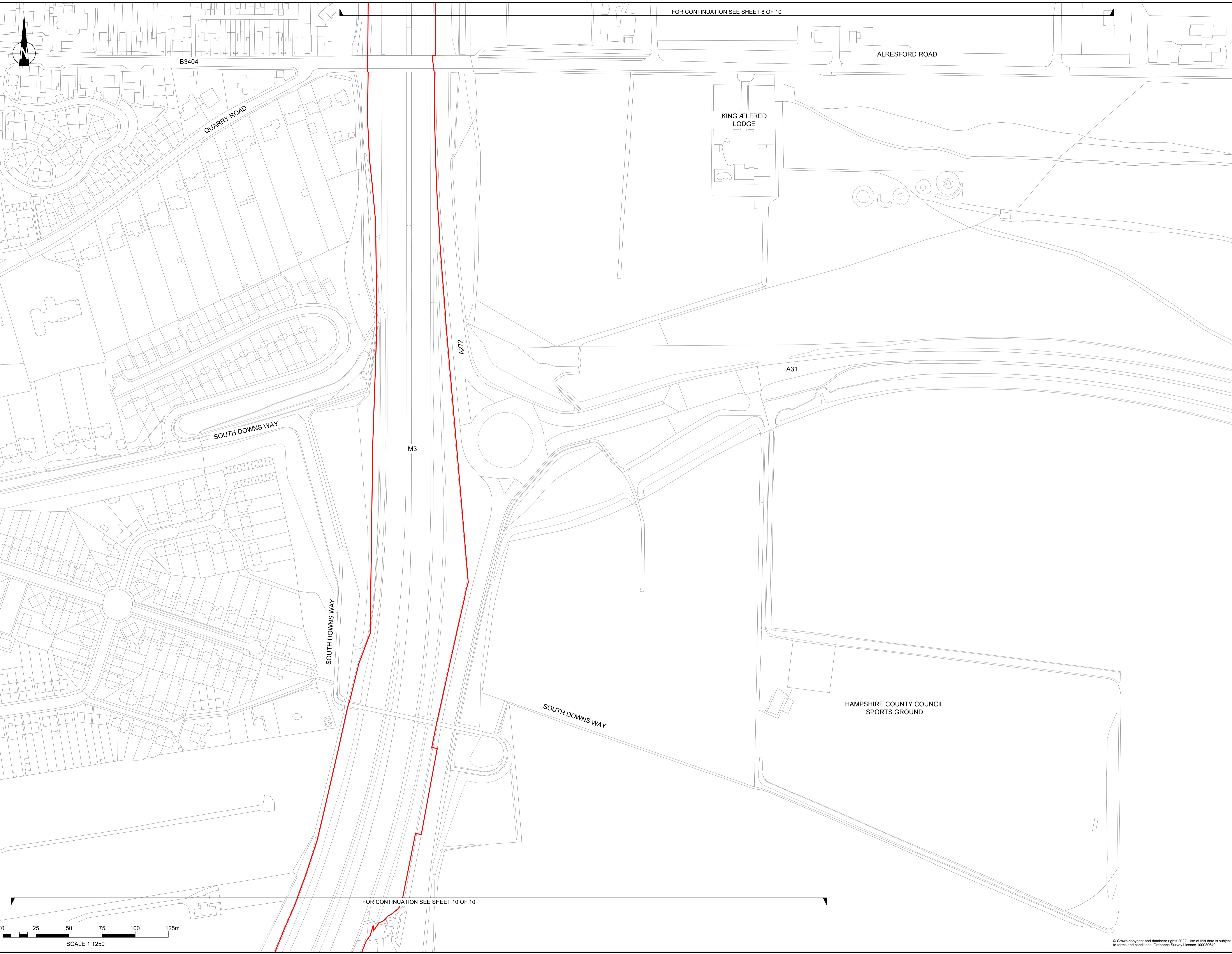
CLIENT

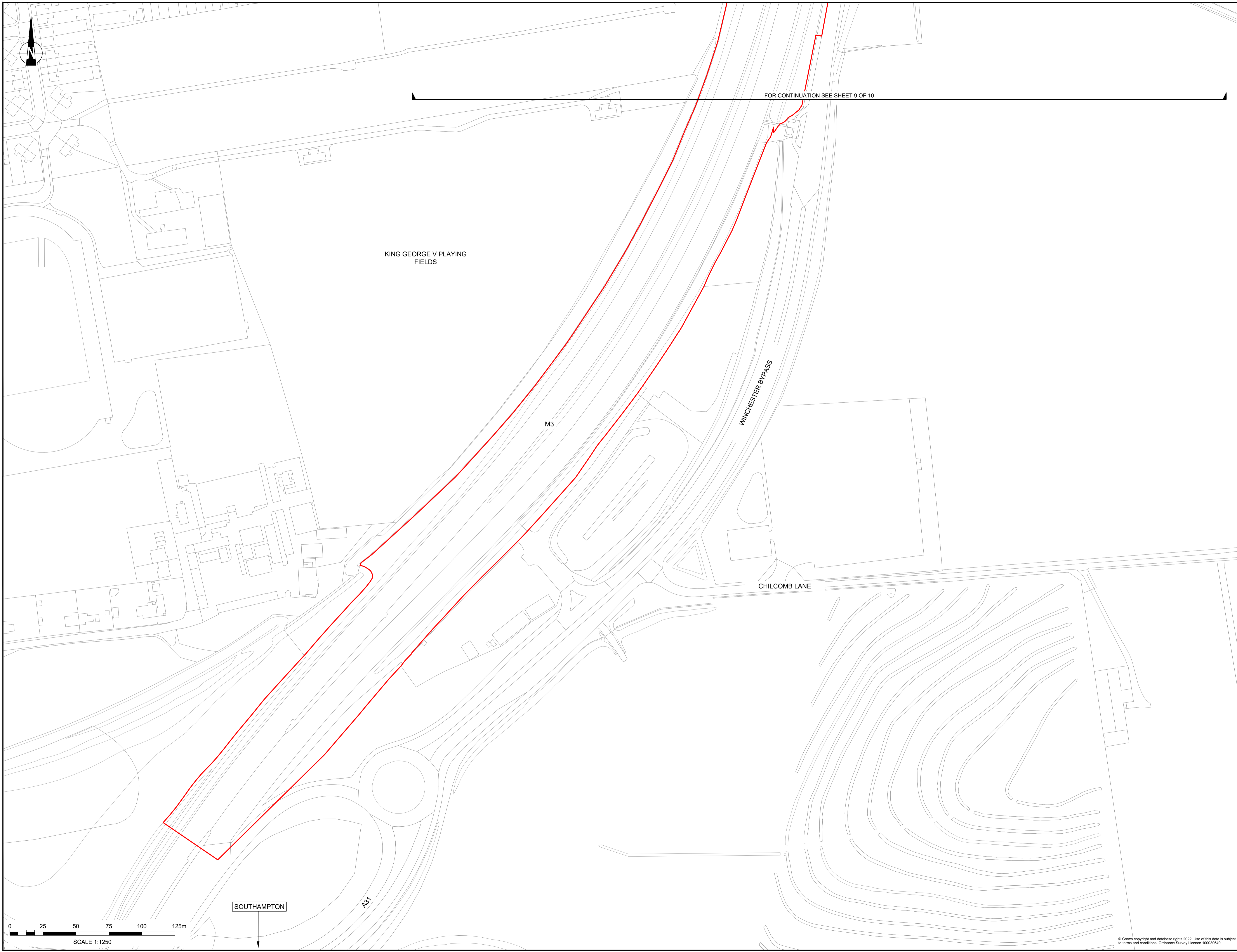
PROJECT TITLE
M3 JUNCTION 9 IMPROVEMENT SCHEME

PROJECT STAGE
PCF STAGE 3

DRAWING TITLE
**DRAINAGE & SURFACE WATER PLANS
 APFP REGULATION s(2)(a)
 SHEET 9 OF 10
 DOCUMENT REFERENCE: 2.12**

SUITABILITY
APPLICATION SUBMISSION
 SHEET SIZE: A1 | SCALE: 1:1,250 | STATUS: REV 0
 DRAWING NUMBER
 HES51511-VFK-LSI-X_XXXX_XX-DR-ZL-7009





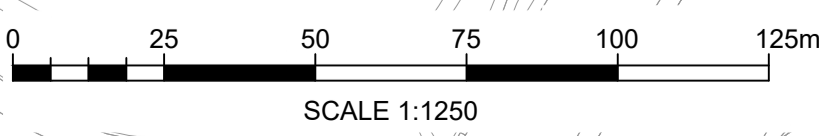
FOR CONTINUATION SEE SHEET 9 OF 10

KING GEORGE V PLAYING FIELDS

WINCHESTER BYPASS

CHILCOMB LANE

SOUTHAMPTON

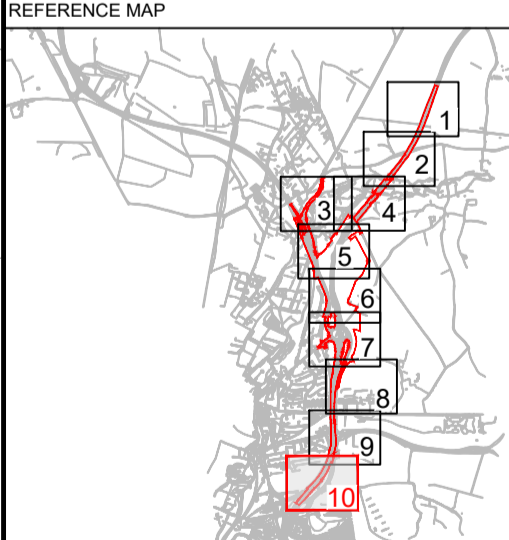


NOTES
 Purpose of use
APPLICATION SUBMISSION
 Development Consent Order Number / Document
TR010055/2.12
 1. THIS DRAWING HAS BEEN PRODUCED USING CAD SOFTWARE. THEREFORE ALL DIMENSIONS ARE SHOWN IN METRES UNLESS SHOWN OTHERWISE.
 2. DO NOT SCALE FROM THIS DRAWING. USE ONLY PRINTED DIMENSIONS.
 3. THE DESIGN SHOWN WILL BE SUBJECT TO DETAILED DESIGN DEVELOPMENT IN ACCORDANCE WITH THE PROVISIONS OF THE DEVELOPMENT CONSENT ORDER.

- KEY TO SYMBOLS
- DEVELOPMENT CONSENT ORDER BOUNDARY
 - LAND NOT INCLUDED IN ORDER LIMITS
 - PROPOSED HIGHWAY WORK OUTLINE
 - PROPOSED ROAD MARKINGS
 - PROPOSED HIGHWAY DRAINAGE NETWORK
 - RETAINED EXISTING DRAINAGE
 - RIVER ITCHEN
 - PROPOSED SURFACE WATER GEOCELLULAR ATTENUATION
 - PROPOSED SURFACE WATER INFILTRATION BASIN
 - PROPOSED SURFACE WATER LINED BASIN
 - PROPOSED SURFACE WATER SWALE
 - PROPOSED AREA OF NEW CARRIAGEWAY
 - RETAINED EXISTING CARRIAGEWAY AND ASSOCIATED DRAINAGE FEATURES
 - ∩ PROPOSED SURFACE WATER HEADWALL / OUTFALL
 - PS PROPOSED SURFACE WATER PENSTOCK
 - PROPOSED SURFACE WATER SEDIMENT FOREBAY
 - ⊗ EXISTING SURFACE WATER SOAKAWAY FEATURE TO BE REFURBISHED AND REUSED
 - FC PROPOSED SURFACE WATER FLOW CONTROL MANHOLE
 - ∨ PROPOSED GRASSED BASINS
 - X-X- EXISTING INFILTRATION FEATURE TO BE ABANDONED

NOTE:
 EXACT FORM OF DRAINAGE REQUIRED TO COLLECT SURFACE WATER RUN OFF (E.G. GULLIES, FILTER DRAINS, CONCRETE CHANNELS) WILL BE DETERMINED AT DETAILED DESIGN

REV	DATE	REVISION NOTE	ORIG	CHKD	APPD
0	NOVEMBER 2022	APPLICATION SUBMISSION	GP	LC	MF



DESIGNER

CONTRACTOR

CLIENT

PROJECT TITLE
M3 JUNCTION 9 IMPROVEMENT SCHEME

PROJECT STAGE
PCF STAGE 3

DRAWING TITLE
**DRAINAGE & SURFACE WATER PLANS
 APFP REGULATION s(2)(a)
 SHEET 10 OF 10
 DOCUMENT REFERENCE: 2.12**

SUITABILITY
APPLICATION SUBMISSION
 SHEET SIZE: A1 SCALE: 1:1250 STATUS: REV 0
 DRAWING NUMBER
 HES51511-VFK-LSI-X_XXXX_XX-DR-ZL-7010

© Crown copyright and database rights 2022. Use of this data is subject to terms and conditions. Ordnance Survey Licence 100030649